

BOX SCORE: \*\*\* FINAL \*\*\*

Date: 03-25-88 Site: State Tourney, Frankfort

Attendance: 2,925

Team: Henry Clay

NO.	NAME	TOTAL FG		3-POINT		FT	FTA	REB			PF	TP	A	TO	BLK	S	MIN
		FG	FGA	FG	FGA			O	D	T							
24	Barney, Alicon	2	2	0	0	0	1	2	4	5	1	4	0	1	0	0	19
50	Bright, Demetria	5	12	0	0	3	4	1	10	11	0	13	0	4	1	0	30
40	Walker, Tammy	3	6	0	0	0	2	1	4	5	4	6	0	3	0	2	24
20	Weissmueller, D	2	6	0	0	1	3	1	1	2	3	5	2	2	0	1	27
30	Hughes, Jeanetta	2	5	0	0	0	0	4	1	5	3	4	3	2	0	0	23
12	Smith, Dawn	1	7	0	2	0	0	1	1	2	3	2	3	5	0	1	27
54	Hoter, Angela	0	3	0	0	2	2	2	2	4	4	2	1	2	0	0	10
TEAM									1	1							
TOTALS		15	41	0	2	6	12	12	24	36	18	36	9	19	1	4	160
Percentages:		Game-----	FG	15/ 41	36.6%	3-PT.	0/ 2	0.0%	FT	6/ 12	50.0%						
		Period 1	4/ 9	44.4%	0/ 2	0.0%											
		Period 2	3/ 9	33.3%	0/ 0	0.0%											
		Period 3	5/ 14	35.7%	0/ 0	0.0%											
		Period 4	3/ 9	33.3%	0/ 0	0.0%											

Team: Ohio County

NO.	NAME	TOTAL FG		3-POINT		FT	FTA	REB			PF	TP	A	TO	BLK	S	MIN
		FG	FGA	FG	FGA			O	D	T							
14	Burden, Donna	3	6	0	0	0	0	0	0	0	4	6	1	3	1	0	14
24	Whitten, Steph.	1	5	0	0	3	8	7	9	16	2	5	0	1	0	2	32
34	Hawes, Kerri	5	12	0	0	0	0	4	1	5	2	10	1	3	0	3	31
10	Carter, Missy	5	11	0	0	0	0	1	2	3	2	10	2	4	0	3	32
12	Riley, Debra	2	7	0	0	0	1	0	1	1	4	4	1	2	0	1	25
54	Johnson, M.	0	3	0	0	2	6	0	3	3	2	2	0	0	0	0	19
42	Burdin, Rachael	0	0	0	0	0	1	0	0	0	0	0	0	0	0	0	7
TEAM									2	2							
TOTALS		16	44	0	0	5	16	12	18	30	16	37	5	13	1	9	160
Percentages:		Game-----	FG	16/ 44	36.4%	3-PT.	0/ 0	0.0%	FT	5/ 16	31.3%						
		Period 1	5/ 9	55.6%	0/ 0	0.0%											
		Period 2	4/ 9	44.4%	0/ 0	0.0%											
		Period 3	4/ 17	23.5%	0/ 0	0.0%											
		Period 4	3/ 9	33.3%	0/ 0	0.0%											

OFFICIALS: Sam Higdon, Tom Thompson, Alt. - J. Baker  
 Technicals: None

SCORE BY PERIODS					
Henry Clay	8	10	10	8	= 36
Ohio County	11	10	9	7	= 37

Produced by the K.H.S.A.A. Stat Crew with FINAL III\*\*

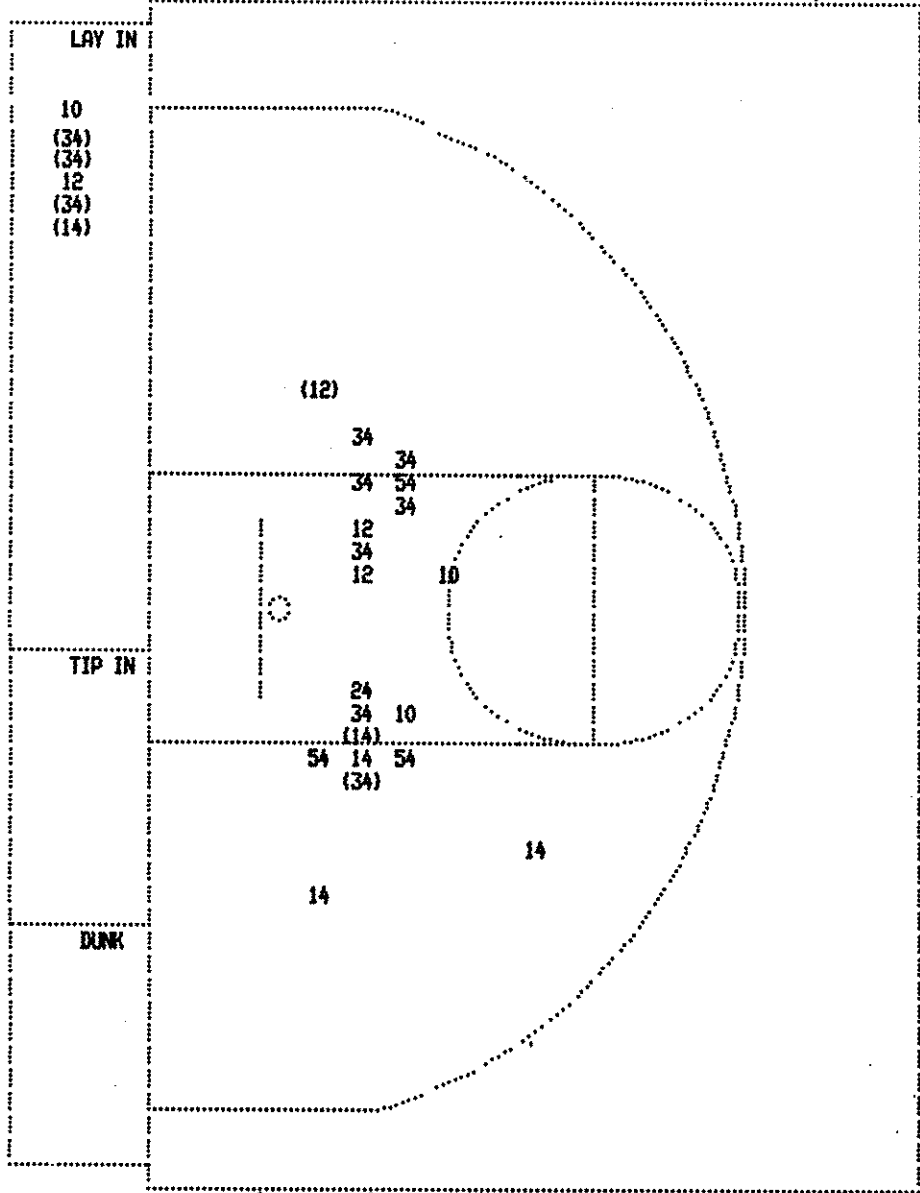
Henry Clay "Lady Devils" vs Ohio County "Lady Eagles"  
2nd Half Play by Play

Tip off at 1:00 p.m. on 03/25/88 at State Tourney, Frankfort  
Produced by the K.H.S.A.A. Stat Crew with FINCL III\*\*

PAGE : 1

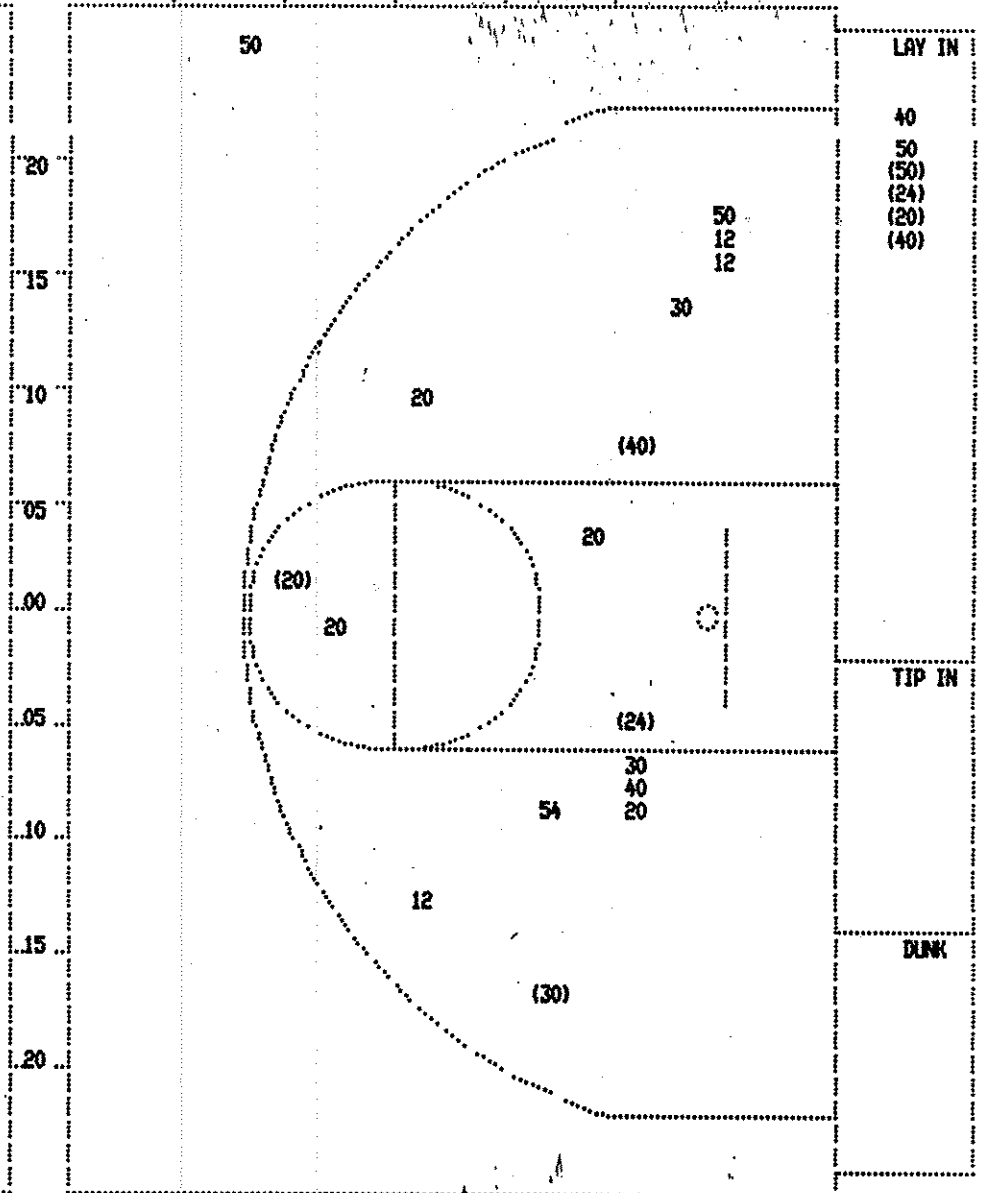
Player	Team	Ohio County	Time	Score	Henry Clay	Player	Team	
Burden, Donna, Whitten, Steph., Hawes, Kerri, Carter, Missy, Riley, Debra			Barney, Alicon, Bright, Demetria, Walker, Tammy, Weissmueller, D, Hughes, Jeanetta					
Ball to Lady Eagles			3 7:55		Foul on Hughes, Jeanetta	1	1	
			3 7:30		Foul on Hughes, Jeanetta	2	2	
2-2	100%	10-20 50.0%	4 ft Lane Turnaround by Burden, Donna	3 7:27	*23-18			
1		2	Assist by Hawes, Kerri					
Sub In: Johnson, M. Out: Hawes, Kerri			3 6:50	23-20*	Follow Layup by Bright, Demetria	5-10	50.0% 8-21 38.0%	
Player Control Foul on Burden, Donna			3 6:17					
3		1		3 6:00				
Foul on Carter, Missy			3 5:35	23-22*	4 ft Lane Turnaround by Barney, Alicon	1-1	100% 9-22 40.9%	
Sub In: Johnson, M. Out: Burden, Donna					Assist by Hughes, Jeanetta	2	7	
1		2		3 5:14				
Foul on Burden, Donna			3 5:14					
4		3		3 5:11	23-24*	Follow Layup by Barney, Alicon	2-2	100% 10-24 41.6%
Sub In: Johnson, M. Out: Burden, Donna			3 5:11					
Follow Layup by Hawes, Kerri			3 5:11		Barney, Alicon, 1 Free Throw missed	0-1	00.0% 4-5 80.0%	
2-4	50.0%	11-25 44.0%	Foul on Riley, Debra	3 5:11	*25-24			
3		4		3 4:53				
Foul on Walker, Tammy			3 4:18			3	3	
Sub In: Smith, Dawn Out: Hughes, Jeanetta			3 4:18					
Sub In: Hoten, Angela Out: Walker, Tammy			3 3:37					
2-5	40.0%	12-28 42.8%	10 ft Right Base Line Driving by Riley, Debra	3 3:13	*27-24			
1		3	Assist by Carter, Missy					
Foul on Riley, Debra			3 2:07		Foul on Hoten, Angela	2	4	
4		5		3 2:05				
Sub In: Burdin, Rachael Out: Riley, Debra			3 2:04		Weissmueller, D, 1 & Bonus missed 1st	0-1	00.0% 4-6 66.6%	
Whitten, Steph., 1 & Bonus made 1st missed 2nd			3 2:04		Foul on Hoten, Angela	3	5	
2-4	50.0%	4-11 36.3%		3 2:04	*28-24			
Follow Layup by Hawes, Kerri			3 1:38	28-25*	Layup Off Fast Break by Weissmueller, D	1-3	33.3% 11-31 35.4%	
			3 1:02		Sub In: Hughes, Jeanetta Out: Barney, Alicon			
3-8	37.5%	13-35 37.1%		3 0:19	*30-25			
			3 0:04	30-28*	17 ft Right Side Jump shot by Hughes, Jeanetta	2-4	50.0% 12-32 37.5%	

Player	Team	Ohio County	Time	Score	Henry Clay	Player	Team
Carter, Missy	Riley, Debra	Whitten, Steph., Hawes, Kerri, Johnson, M.			Smith, Dawn, Bright, Demetria, Walker, Tammy, Weissmueller, D, Hughes, Jeanetta		
2	6	Ball to Lady Eagles Player Control Foul on Hawes, Kerri	4 7:41				
			4 7:41		Sub In: Hoten, Angela Out: Bright, Demetria		
2-5	40.0% 4-12 33.3%	Whitten, Steph., 1 & Bonus missed 1st	4 7:11		Foul on Hoten, Angela	4	6
1	7	Foul on Whitten, Steph.	4 7:11				
			4 6:38				
			4 6:38		Sub In: Bright, Demetria Out: Hoten, Angela		
			4 6:38		Walker, Tammy, 2 Free Throws missed both	0-2	00.0% 4-8 50.0%
			4 6:15	30-30*	18 ft Circle Jump shot by Weissmueller, D	2-4	50.0% 13-35 37.1%
			4 5:51	30-32*	8 ft Left Side Bank by Walker, Tammy	2-5	40.0% 14-36 38.8%
					Assist by Smith, Dawn	3	8
		Sub In: Burden, Donna Out: Johnson, M.	4 5:29				
			4 5:29	30-34*	Driving Layup by Walker, Tammy	3-6	50.0% 15-37 40.5%
					Assist by Hughes, Jeanetta	3	9
			4 5:00		Foul on Walker, Tammy	4	7
			4 5:00		Sub In: Barney, Alicon Out: Hughes, Jeanetta		
3-7	42.8% 5-14 35.7%	Whitten, Steph., 2 Free Throws missed 1st made 2nd	4 5:00	*31-34			
			4 4:17		Sub In: Hoten, Angela Out: Walker, Tammy		
4-11	35.3% 14-41 34.1%	Follow Layup by Hawes, Kerri	4 4:09	*33-34			
5	8	Foul on Riley, Debra	4 4:01		Sub In: Walker, Tammy Out: Hoten, Angela		
			4 4:01				
		Traveling Violation on Carter, Missy	4 3:54				
		Steal by Riley, Debra	4 3:49		Bad Pass by Bright, Demetria	4	18
2-7	28.5% 14-42 33.3%	3 ft Lane Jump shot by Riley, Debra, missed	4 3:45				
2	9	Foul on Whitten, Steph.	4 3:44		Rebound by Bright, Demetria	D-1 Tot-1	D-1 Tot-33
			4 3:24				
D-1 Tot-1	D-1 Tot-27	Rebound by Hawes, Kerri	4 3:24	33-35*	Bright, Demetria, 1 & Bonus made 1st missed 2nd	3-4	75.0% 5-10 50.0%
5-12	41.6% 15-43 34.8%	6 ft Left Side Bank by Hawes, Kerri, made	4 3:24				
1	4	Assist by Riley, Debra	4 3:15	*35-35			
2	10	Foul on Carter, Missy					
D-1 Tot-1	D-2 Tot-28	Rebound by Whitten, Steph.	4 3:04				
3-6	50.0% 16-44 36.3%	Driving Layup by Burden, Donna, made	4 3:01	35-36*	Weissmueller, D, 1 & Bonus made 1st missed 2nd	1-3	33.3% 6-12 50.0%
2	5	Assist by Carter, Missy	4 2:53	*37-36			
1	9	Steal by Whitten, Steph.					
			4 2:46				
			4 2:39		Bad Pass by Smith, Dawn	5	19
		REB: 28 A: 5 BLK: 0 TO: 13 PF: 10	4 2:35				
		S: 9 FT: 5-14 35.7% FG: 16-44 36.3%					
		No. 1 Ohio County			REB: 33 A: 9 BLK: 1 TO: 19 PF: 7		
					S: 4 FT: 6-12 50.0% FG: 15-38 39.4%		
			4 2:35		Sub In: Hughes, Jeanetta Out: Barney, Alicon		
			4 1:20		Foul on Smith, Dawn	2	8
			4 1:20				
0-1	00.0% 5-15 33.3%	Riley, Debra, 1 & Bonus missed 1st	4 1:18		Rebound by Bright, Demetria	D-2 Tot-2	D-2 Tot-34
			4 0:38				
					REB: 34 A: 9 BLK: 1 TO: 19 PF: 8		
					S: 4 FT: 6-12 50.0% FG: 15-38 39.4%		
			4 0:18		16 ft Circle Jump shot by Weissmueller, D, missed	2-6	33.3% 15-39 38.4%
D-2 Tot-2	D-3 Tot-29	Rebound by Whitten, Steph.	4 0:16				
			4 0:16		Foul on Hughes, Jeanetta	3	9
3-8	37.5% 5-16 31.2%	Whitten, Steph., 1 & Bonus missed 1st	4 0:16				
			4 0:15		Rebound by Hughes, Jeanetta	D-1 Tot-1	D-3 Tot-35
			4 0:04		Shot by Bright, Demetria, missed	5-12	41.6% 15-40 37.5%
			4 0:03		Rebound by Hughes, Jeanetta	0-1 Tot-2	0-1 Tot-36
			4 0:02		14 ft Left Base Line Jump shot		
					by Hughes, Jeanetta, missed	2-5	40.0% 15-41 36.5%
1	1	Block by Burden, Donna	4 0:02				



**Ohio County**

Player	Player	Player
14 - Burden, Do 2 / 5 40.0%	54 - Johnson, M 0 / 3 0.0%	
24 - Whitten, S 0 / 1 0.0%		
34 - Hawes, Ker 4 / 10 40.0%		
10 - Carter, Mi 0 / 3 0.0%		
12 - Riley, Deb 1 / 4 25.0%		
Layups 1-9 Ft 10-15 Ft Over 15 Ft 3 Pointers Total		
4 / 6 2 / 17 1 / 3 7 / 26		
66.7% 11.8% 33.3% 26.9%		



**Henry Clay**

Player	Player	Player
24 - Barney, Al 2 / 2 100.0%	12 - Smith, Daw 0 / 3 0.0%	
50 - Bright, Dem 1 / 4 25.0%	54 - Hoten, Ang 0 / 1 0.0%	
40 - Walker, Ta 2 / 4 50.0%		
20 - Weissmuell 2 / 6 33.3%		
30 - Hughes, Joe 1 / 3 33.3%		
Layups 1-9 Ft 10-15 Ft Over 15 Ft 3 Pointers Total		
4 / 7 2 / 6 0 / 2 2 / 8 8 / 23		
57.1% 33.3% 0.0% 25.0% 34.8%		

BOX SCORE: \* OFFICIAL FIRST HALF \* Date: 03-25-88 Site: State Tourney, Frankfort Attendance: 2,925

Team: Herry Clay

NO.	NAME	TOTAL FG		3-POINT		FT	FTA	REB			PF	TP	A	TD	BLK	S	MIN
		FG	FGA	FG	FGA			O	D	T							
24	Barrey, Alicon	0 / 0		0 / 0		0	0	0	3	3	1	0	0	0	0	9	
50	Bright, Demetria	4 / 8		0 / 0		2	2	0	4	4	0	10	0	2	0	16	
40	Walker, Tammy	1 / 2		0 / 0		0	0	1	1	2	2	0	3	0	1	11	
20	Weissmueller, D	0 / 0		0 / 0		0	0	1	0	1	3	0	2	0	1	12	
30	Hughes, Jeanetta	1 / 2		0 / 0		0	0	2	0	2	0	2	1	1	0	13	
12	Smith, Dawn	1 / 4		0 / 2		0	0	1	0	1	1	2	2	0	0	14	
54	Hoten, Angela	0 / 2		0 / 0		2	2	1	0	1	1	2	1	0	0	5	
TEAM																	
TOTALS		7 / 18		0 / 2		4	4	6	9	15	8	18	6	12	0	2	80
Percentages:		HALF-----		FG		7 / 18	38.9%	3-PT.		0 / 2	0.0%	FT		4 / 4	100.0%		
		Period 1				4 / 9	44.4%			0 / 2	0.0%			0 / 0	0.0%		
		Period 2				3 / 9	33.3%			0 / 0	0.0%			4 / 4	100.0%		

Team: Ohio County

NO.	NAME	TOTAL FG		3-POINT		FT	FTA	REB			PF	TP	A	TD	BLK	S	MIN
		FG	FGA	FG	FGA			O	D	T							
14	Burden, Donna	1 / 1		0 / 0		0	0	0	0	0	2	2	1	2	0	0	5
24	Whitten, Steph.	1 / 4		0 / 0		1	2	3	2	5	0	3	0	1	0	1	16
34	Hawes, Kerri	1 / 2		0 / 0		0	0	0	0	0	1	2	0	2	0	2	16
10	Carter, Missy	5 / 8		0 / 0		0	0	1	2	3	0	10	0	1	0	3	16
12	Riley, Debra	1 / 3		0 / 0		0	0	0	0	0	2	2	0	1	0	0	11
54	Johnson, M.	0 / 0		0 / 0		2	6	0	1	1	2	2	0	0	0	0	11
42	Burdin, Rachael	0 / 0		0 / 0		0	1	0	0	0	0	0	0	0	0	0	5
TEAM																	
TOTALS		9 / 18		0 / 0		3	9	4	5	9	7	21	1	7	0	6	80
Percentages:		HALF-----		FG		9 / 18	50.0%	3-PT.		0 / 0	0.0%	FT		3 / 9	33.3%		
		Period 1				5 / 9	55.6%			0 / 0	0.0%			1 / 2	50.0%		
		Period 2				4 / 9	44.4%			0 / 0	0.0%			2 / 7	28.6%		

OFFICIALS: Sam Higdon, Tom Thompson, Alt.-J. Baker  
 Technicals: None

SCORE BY PERIODS			
Herry Clay	8	10	= 18
Ohio County	11	10	= 21

Produced by the K.H.S.A.A. Stat Crew with FINCL III™

Henry Clay "Lady Devils" vs Ohio County "Lady Eagles"  
1st Half Play by Play

Tip off at 1:00 p.m. on 03/25/88 at State Tourney, Frankfort  
Produced by the K.H.S.A.A. Stat Crew with FINNL III\*\*

Player	Team	Ohio County	Time	Score	Henry Clay	Player	Team
Burden, Donna, Whitten, Steph., Hawes, Kerri, Carter, Missy, Riley, Debra					Barney, Alicon, Bright, Demetria, Walker, Tammy, Weissmueller, D, Hughes, Jeanetta		
1	1	Foul on Burden, Donna	1 6:59		Ball to Lady Devils		
1	2	Foul on Riley, Debra	1 6:35				
1-1	100%	1-2 50.0%	8 ft Right Base Line Jump shot by Burden, Donna	1 6:35	Sub In: Smith, Dawn		
1-1	100%	2-3 66.6%	Layup Off Fast Break by Carter, Missy	1 6:05	Out: Hughes, Jeanetta	1	1
				1 6:00	Foul on Weissmueller, D		
				1 5:44			
				1 5:30	4 ft Lane Bank by Walker, Tammy	1-1	100% 1-2 50.0%
					Assist by Smith, Dawn	1	1
1-1	100%	3-4 75.0%	11 ft Lane Jump shot by Riley, Debra	1 5:09	Foul on Walker, Tammy	1	2
1	1	Assist by Burden, Donna	1 5:08	*6-2			
REB: 1 A: 1 BLK: 0 TD: 1 PF: 2				1 4:35	REB: 1 A: 1 BLK: 0 TD: 4 PF: 2		
S: 1 FT: 0-0 00.0% FG: 3-4 75.0%				T I M E -- O U T Henry Clay No. 1		S: 0 FT: 0-0 00.0% FG: 1-2 50.0%	
2-2	100%	4-6 66.6%	4 ft Lane Driving by Carter, Missy	1 3:41	Sub In: Hughes, Jeanetta Out: Barney, Alicon		
				1 3:41	*8-2		
2	3	Player Control Foul on Burden, Donna	1 2:56		Foul on Weissmueller, D	2	3
		Sub In: Johnson, M. Out: Burden, Donna	1 2:42				
			1 2:42				
3-4	75.0%	5-8 62.5%	4 ft Lane Bank by Carter, Missy	1 2:28	8-4*	1-1	100% 2-4 50.0%
				1 1:54	*10-4		
				1 1:28	10-6*	1-1	100% 3-5 60.0%
					6 ft Lane Turnaround by Bright, Demetria	1	2
					Assist by Weissmueller, D		
1-2	50.0%	1-2 50.0%	Johnson, M., 2 Free Throws missed 1st made 2nd	1 0:24	10-8*	1-2	50.0% 4-7 57.1%
				1 0:14	Follow Layup by Smith, Dawn	2	4
				1 0:14	Foul on Walker, Tammy		

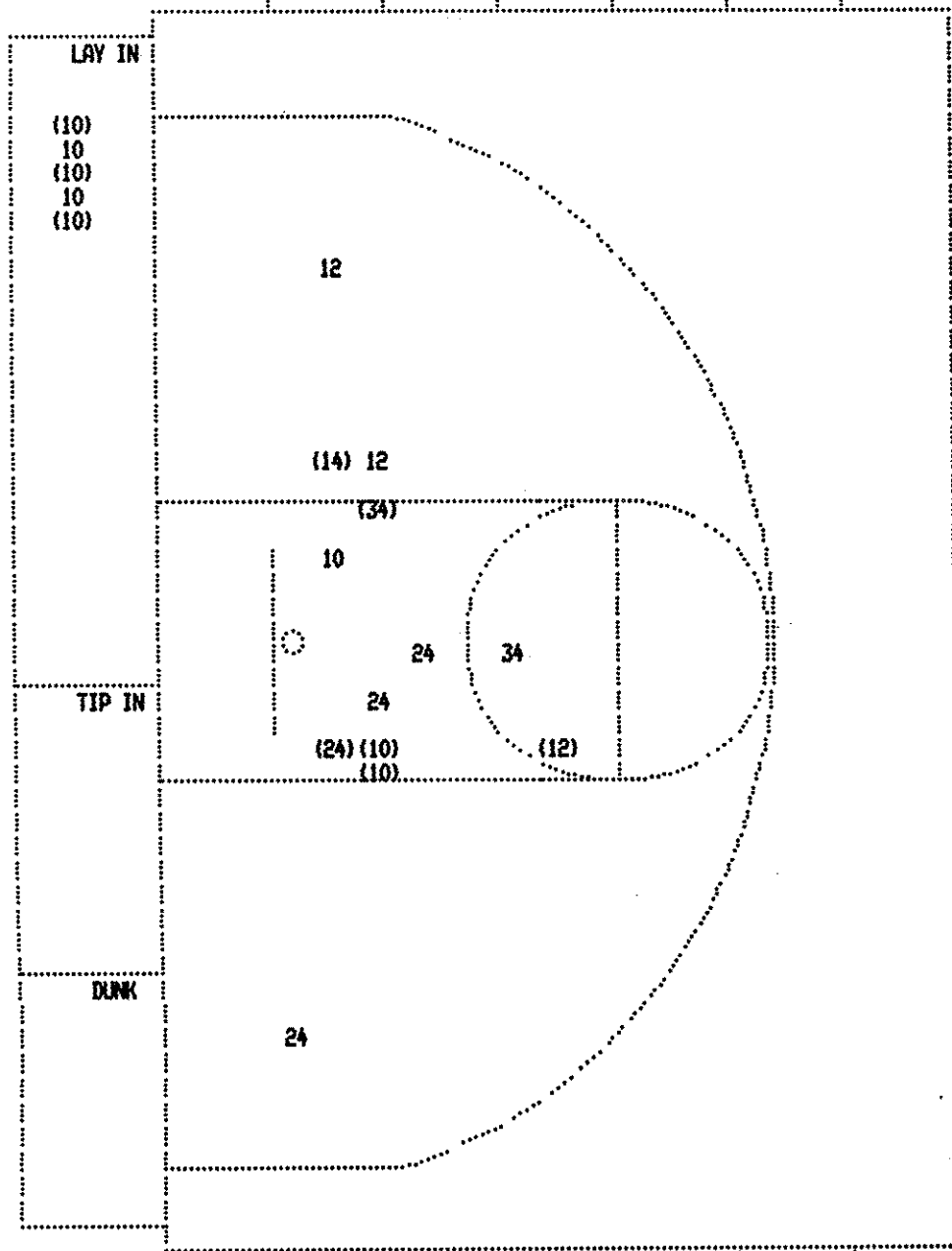
Henry Clay "Lady Devils" vs Ohio County "Lady Eagles"  
1st Half Play by Play

PAGE : 2

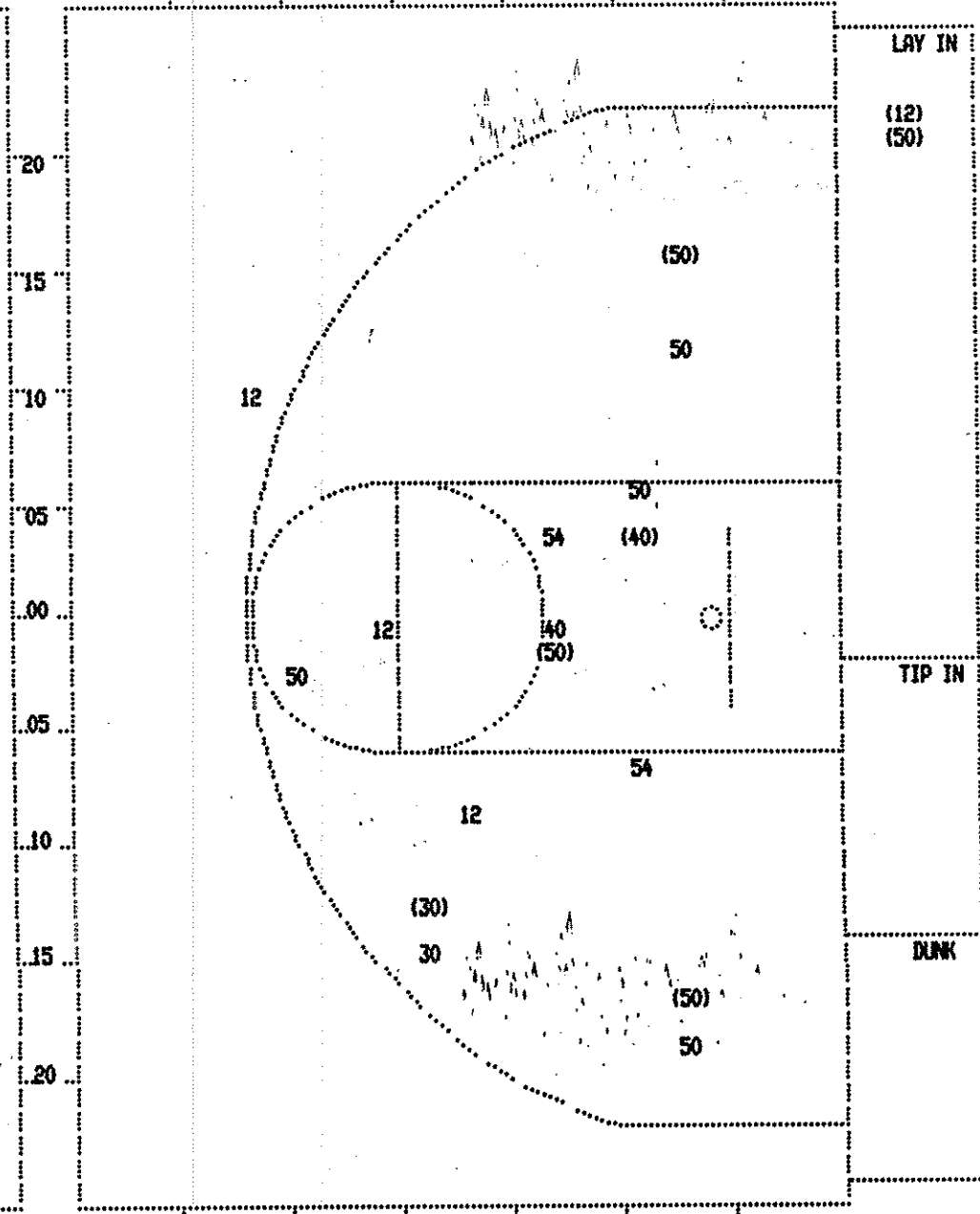
Tip off at 1:00 p.m. on 03/25/88 at State Tourney, Frankfort  
Produced by the K.H.S.A.A. Stat Crew with FINAL III™

Player	Team	Ohio County	Time	Score	Henry Clay	Player	Team
Carter, Missy	Riley, Debra	Hawes, Kerri, Whitten, Steph., Johnson, M.			Smith, Dawn, Weissmueller, D, Hughes, Jeanetta, Bright, Demetria, Walker, Tammy		
2	4	Ball to Lady Eagles	2 6:21				
4-6	66.6%	6-12 50.0% Foul on Riley, Debra	2 5:58 #13-8				
		Follow Layup by Carter, Missy	2 5:33 13-10*	16 ft Left Base Line Jump shot by Bright, Demetria	2-4	50.0%	5-12 41.6%
				Assist by Weissmueller, D	2		3
1-2	50.0%	7-13 53.8% 6 ft Lane Turnaround by Hawes, Kerri	2 5:20 #15-10				
		Sub In: Burdin, Rachael Out: Riley, Debra	2 4:56				
			2 4:56	Sub In: Barney, Alicon Out: Hughes, Jeanetta			
			2 4:47	Sub In: Hoten, Angela Out: Bright, Demetria			
			2 4:47	Sub In: Hughes, Jeanetta Out: Weissmueller, D			
0-1	00.0%	1-3 33.3% Burdin, Rachael, 1 & Bonus missed 1st	2 4:47	Foul on Weissmueller, D	3		5
1		5 Foul on Johnson, M.	2 4:46				
			2 4:34	Assist by Hoten, Angela	1		4
			2 4:34 15-11*	Hoten, Angela, 1 Free Throw made	1-1	100%	1-1 100%
			2 4:28 15-12*	Hoten, Angela, 1 Free Throw made	2-2	100%	2-2 100%
		1 Player Control Foul on Hawes, Kerri	2 4:07				
			2 4:07	Sub In: Bright, Demetria Out: Walker, Tammy			
1-2	50.0%	2-5 40.0% Whitten, Steph., 1 & Bonus made 1st missed 2nd	2 3:50	Foul on Barney, Alicon	1		6
			2 3:50 #16-12				
			2 3:14 16-14*	Driving Layup by Bright, Demetria	3-6	50.0%	6-16 37.5%
				Assist by Smith, Dawn	2		5
			2 2:02 16-16*	16 ft Right Base Line Jump shot by Bright, Demetria	4-8	50.0%	7-18 38.8%
				Assist by Hughes, Jeanetta	1		6
1-4	25.0%	2-7 28.5% Johnson, M., 2 Free Throws missed both	2 1:26	Foul on Hoten, Angela	1		7
1-4	25.0%	8-17 47.0% 4 ft Lane Follow by Whitten, Steph.	2 1:26				
5-8	62.5%	9-18 50.0% Layup Off Fast Break by Carter, Missy	2 1:20 #18-16				
2		7 Foul on Johnson, M.	2 1:01 #20-16				
			2 0:38				
			2 0:36 20-18*	Bright, Demetria, 1 & Bonus made both	2-2	100%	4-4 100%
			2 0:17	Foul on Smith, Dawn	1		8
2-6	33.3%	3-9 33.3% Johnson, M., 1 & Bonus made 1st missed 2nd	2 0:17 #21-18				

FIRST HALF SHOT CHART Produced by the K.H.S.A.A. Stat Crew with FINAL III™



Player	1-9 Ft	10-15 Ft	Over 15 Ft	3 Pointers	Total
14 - Burden, Do	1 / 1	100.0%			
24 - Whitten, S	1 / 4	25.0%			
34 - Hawes, Ker	1 / 2	50.0%			
10 - Carter, Mi	5 / 8	62.5%			
12 - Riley, Deb	1 / 3	33.3%			
<b>Layups</b>	<b>1-9 Ft</b>	<b>10-15 Ft</b>	<b>Over 15 Ft</b>	<b>3 Pointers</b>	<b>Total</b>
	3 / 5	5 / 10	1 / 1	0 / 2	9 / 18
	60.0%	50.0%	100.0%	0.0%	50.0%



Player	1-9 Ft	10-15 Ft	Over 15 Ft	3 Pointers	Total
50 - Bright, Dew	4 / 8	50.0%			
40 - Walker, Ta	1 / 2	50.0%			
30 - Hughes, Jea	1 / 2	50.0%			
12 - Smith, Daw	1 / 4	25.0%			
54 - Hoten, Ang	0 / 2	0.0%			
<b>Layups</b>	<b>1-9 Ft</b>	<b>10-15 Ft</b>	<b>Over 15 Ft</b>	<b>3 Pointers</b>	<b>Total</b>
	2 / 2	2 / 6	0 / 2	3 / 6	0 / 2
	100.0%	33.3%	0.0%	50.0%	0.0%
					7 / 18
					38.9%